

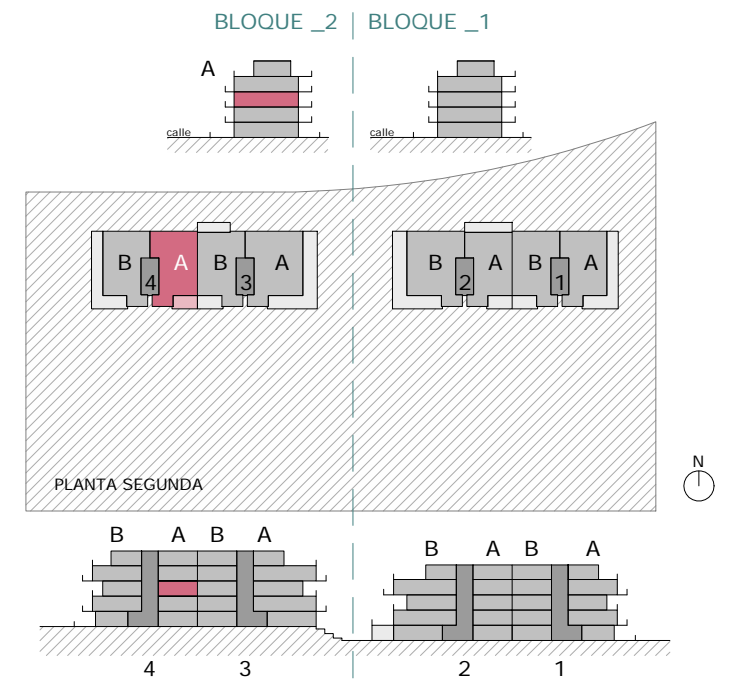
B2.N2.P4.VA ▷



VIVIENDA A - PLANTA SEGUNDA

PORTAL 4 - bloque 2

[3 DORMITORIOS]



SUPERFICIES ÚTILES

| | |
|---------------------------------|-----------------------------|
| Tendedero | 2,47 m ² |
| Salón-comedor-cocina | 42,35 m ² |
| Dormitorio-3 | 11,39 m ² |
| Dormitorio-2 | 10,81 m ² |
| Dormitorio-1 | 16,44 m ² |
| Distribuidor | 6,43 m ² |
| Baño-2 | 4,01 m ² |
| Baño-1 | 4,77 m ² |
| TOTAL SUP. ÚTIL INTERIOR | 98,68 m² |
| Terraza | 11,76 m ² |
| TOTAL SUP. ÚTIL EXTERIOR | 11,76 m² |
| TOTAL SUP. ÚTIL | 110,44 m² |

SUPERFICIES CONSTRUIDAS

| | |
|------------------------------|------------------------------|
| Vivienda | 114,45 m ² |
| % Comunes | 20,66 m ² (2,57%) |
| TOTAL | 135,11 m² |
| Terraza | 12,95 m ² |
| TOTAL SUP. CONSTRUIDA | 148,06 m² |



GESTIONA



SEQUOIA
DESARROLLOS INMOBILIARIOS

PROYECTA

emurban