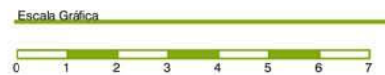
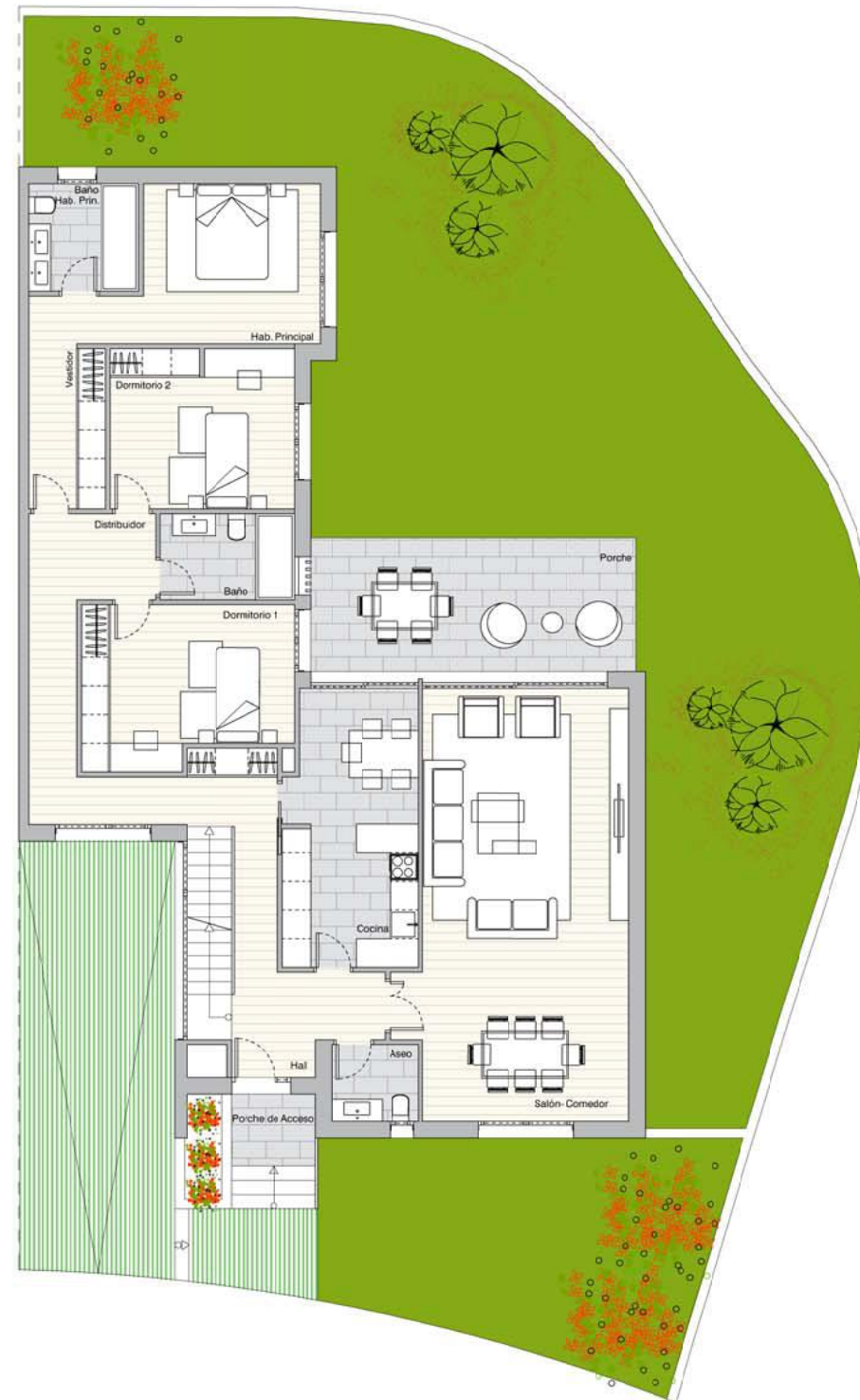
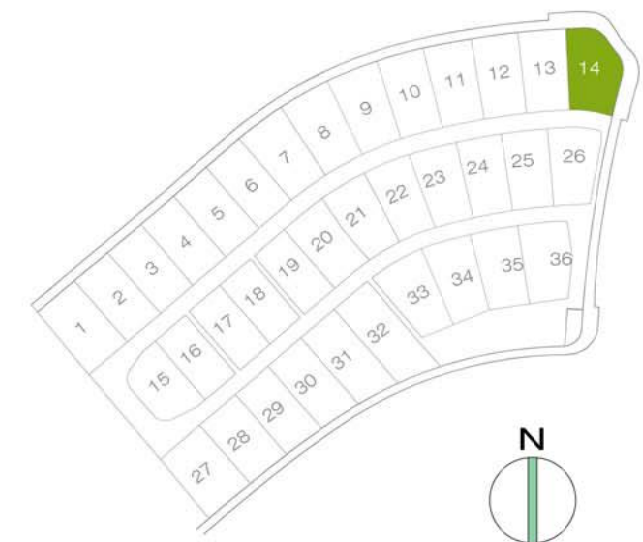


# PRADO BOADILLA

**36 VIVIENDAS UNIFAMILIARES PAREADAS**  
C/DELTA DEL EBRO, 16 - URB. "LA CÁRCAVA"  
BOADILLA DEL MONTE - MADRID



| SUPERFICIES ÚTILES   | EXTERIORES                  |
|----------------------|-----------------------------|
| Jardín Posterior     | 155,55 m <sup>2</sup>       |
| Jardín Delantero     | 35,82 m <sup>2</sup>        |
| Rampa Acceso Garaje  | 29,36 m <sup>2</sup>        |
| Zona Acceso Vivienda | 5,01 m <sup>2</sup>         |
| Vivienda             | 197,62 m <sup>2</sup>       |
| <b>TOTAL PARCELA</b> | <b>423,36 m<sup>2</sup></b> |



## PARCELA 14